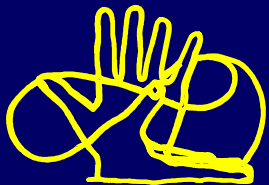


# INDUSTRIAL INJURIES

## EVALUATION AND MANAGEMENT

---

### USE OF THE AMA GUIDES FOR THE EVALUATION OF IMPAIRMENT IN THE UPPER EXTREMITY



RICHARD M. BRAUN, M.D.

# INDUSTRIAL INJURIES

## EVALUATION AND MANAGEMENT

---

### CURRENT CONTROVERSIES

#### ALMAREZ- GUZMAN II

“THE BURDEN OF REBUTING A SCHEDULED PERMANENT DISABILITY RATING RESTES WITH THE PARTY DISPUTUING IT”!



# INDUSTRIAL INJURIES

## EVALUATION AND MANAGEMENT

---

### GUZMAN II – EN BANC DECISION

THE REBUTTAL ... “ MUST BE BASED ON THE GUIDES  
AND DOES NOT MANDATE THAT A WCJ OR APPEALS  
BOARD PANEL MUST ADMIT OR FOLLOW ANY  
REBUTTAL EVIDENCE PRESENTED”



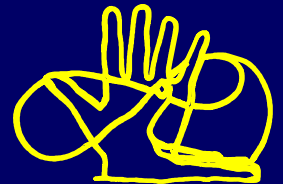
# INDUSTRIAL INJURIES

## EVALUATION AND MANAGEMENT

### CURRENT CONTROVERSIES

#### ALMAREZ- GUZMAN II

- STATE THE DEGREE OF IMPAIRMENT USING ESTABLISHED METHODS
- STATE WHY YOU BELIEVE THIS IS INAPPROPRIATE FOR THIS CASE
- STATE YOUR BEST ESTIMATE OF THE REAL IMPAIRMENT THAT IS PRESENT
- STATE WHY YOU BELIEVE THAT YOUR DECISION IS CORRECT AND REASONABLE AND ADDRESSED IN THE GUIDES



# INDUSTRIAL INJURIES

## EVALUATION AND MANAGEMENT

---

### THE AMA GUIDES: IMPAIRMENT IN THE UPPER LIMB

---

#### MAJOR AREAS OF IMPAIRMENT

- ABSENCE OF BODY PARTS
- LOSS OF RANGE OF MOTION
- NEUROLOGICAL IMPAIRMENT
  - SENSORY / MOTOR
  - STRENGTH LOSS

# INDUSTRIAL INJURIES

## EVALUATION AND MANAGEMENT

---

### THE AMA GUIDES: IMPAIRMENT IN THE UPPER LIMB

---

#### SECONDARY AREAS AND SYSTEMS

- CIRCULATORY SYSTEM
- STRENGTH EVALUATION
- JOINT STABILITY
- INFLAMMATION
- PAIN / RSD-CRPS

# INDUSTRIAL INJURIES

## EVALUATION AND MANAGEMENT

---

MULTIPLE FACTORS OF IMPAIRMENT  
IN A SINGLE BODY PART

---

SHOULDER IMPINGEMENT POST  
ARTHROSCOPIC DECOMPRESSION

---

RANGE OF MOTION FIG 16-40/46  
RESECTION ARTHROPLASTY TABLE 16-27  
STRENGTH LOSS TABLE 16-35 COMBINE

# INDUSTRIAL INJURIES

## EVALUATION AND MANAGEMENT

---

### MULTIPLE FACTORS OF IMPAIRMENT IN A SINGLE BODY PART

---

SHOULDER / POST OP S.A.D.

RANGE / ARTHROPLASTY / STRENGTH

COMBINE

CONVERT UPPER EXTREMITY TO

WHOLE PERSON IMPAIRMENT



# INDUSTRIAL INJURIES

## EVALUATION AND MANAGEMENT

---

### SHOULDER POST OP SAD

---

RANGE LOSS – FLEX + EXT + ABD ... 11% UE

ARTHROPLASTY– Pg. 506 TABLE 10% UE

STRENGTH LOSS – AB + EXT ETC. 9% UE

COMBINE 11% WITH 10% = 20 %

COMBINE 20 % WITH 9% = 27%

27% UE = 16% WHOLE PERSON

# INDUSTRIAL INJURIES

## EVALUATION AND MANAGEMENT

---

### UPPER EXTREMITY VASCULAR DISORDERS

AMA GUIDES PG. 497 ¶16.6

---

#### CASE:

DT IS A 39 YEAR OLD WOMEN WITH NECK AND BILATERAL ARM PAIN. SHE HAS WORKED FOR MANY YEARS IN A JOB THAT REQUIRES OVERHEAD REACHING.

SHE HAS MEASURED PULSE LOSS AND IMPAIRED PERFUSION ( $O_2$  SAT↓) WITH OVERHEAD WORK.

# INDUSTRIAL INJURIES

## EVALUATION AND MANAGEMENT

---

### IMPAIRMENT DUE TO VASCULAR DISORDERS

TABLE 16-17, Page 498

CLASS I DISORDER / INTERMITTANT

SYMPTOMS ASSOCIATED WITH 90° ARM ELEVATION

0-9% IMPAIRMENT UPPER EXTREMITY AVAILABLE

5% SELECTED

TABLE 16-17 PAGE 498

# INDUSTRIAL INJURIES

## EVALUATION AND MANAGEMENT

### STRENGTH EVALUATION

(P507 ¶16.8)

#### ESTABLISH FOUNDATION:

1. STRENGTH LOSS CONSTITUTES AN IMPAIRMENT NOT CONSIDERED (RARE CASE OBJECTIVE DEFECT)
2. COMBINE WITH OTHER IMPAIRMENTS
3. ABSENCE OF REDUCED MOTION PAINFUL CONDITION, DEFORMITY LOSS OF BODY PARTS

# INDUSTRIAL INJURIES

## EVALUATION AND MANAGEMENT



### 45 YO. TRUCK DRIVER'S ARM CAUGHT UNDER THE BED OF A DUMP TRUCK

- RANGE OF MOTION SHOULDER AND ELBOW ARE NORMAL
- PAIN IS MILD, AN ANNOYANCE
- WEAKNESS WHEN HE ATTEMPTS LIFTING, GRIP, PUSH-PULL

30 % UE IMPAIRMENT

# INDUSTRIAL INJURIES

## EVALUATION AND MANAGEMENT

### OTHER FACTORS OF IMPAIRMENT

#### GRIP LOSS (DUE TO QUADRIGIA)

#### CRITERIA:

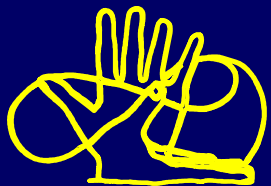
- RARE CASE / IMPAIRING FACTORS NOT CONSIDERED ADEQUATELY IN GUIDES
- EXAMINER CAN COMBINE FACTORS
- NO ALLOWANCE IF DECREASED MOTION, PAIN, DEFORMITY LOSS OF PARTS THAT PREVENT APPLICATION OF MAX FORCE

# INDUSTRIAL INJURIES

## EVALUATION AND MANAGEMENT

### WHAT IS QUADRIGIA? HOW DOES THAT FIT CRITERIA?

- DEFINE / EXPLAIN JM GRIP  $\frac{71}{90}$
- CRITERIA: RARE CASE / NOT COVERED  
COMBINED IMPAIRMENTS ABILITY TO USE GRIP  
METER
- USE UNINJURED SIDE AS CONTROL



REF: CH. 1, pg. 2, ¶ 1.2

# INDUSTRIAL INJURIES

## EVALUATION AND MANAGEMENT

---

### WEAKNESS SECONDARY TO QUADRIQIA

---

**QUADRIQIA:** (CH 16, ¶ 16.8a pg.508 AMA Guides, 5th ed.)

1. STRENGTH LOSS HAS NOT BEEN ADDRESSED BY OTHER METHODS IN THE GUIDES
2. STRENGTH LOSS / OTHER IMPAIRMENTS COULD BE COMBINED WITH OTHERS
3. NO ASSOCIATED MOTIONS, DEFORMITY, PAIN



# INDUSTRIAL INJURIES

## EVALUATION AND MANAGEMENT

### GRIP LOSS

(CAN USE NORMAL SIDE AS CONTROL)

71 LBS MEASURED/ 81 LBS ANTICIPATED  
12.35% LOSS

TABLE 16-34 P509 CONVERTS TO 10% UPPER EXTREMITY

10% UE CAN BE COMBINED

TABLE P604

14% UE COMBINED WITH 10% UE

23% FINAL UPPER EXTREMITY IMPAIRMENT

# INDUSTRIAL INJURIES

## EVALUATION AND MANAGEMENT

---

### CURRENT CONTROVERSIES

#### ALMAREZ- GUZMAN II

- EXAMPLES

RICHARD M. BRAUN, M.D.

